

Madison, Wisconsin

CITY OF MADISON

CITY ENGINEERING DIVISION

DEPARTMENT OF PUBLIC WORKS

PLAN OF PROPOSED IMPROVEMENT

INDEX OF SHEETS

SHEET NO.	TITLE
1	
D1-D4	DETAILS
EC1-EC2	EROSION CONTROL
P1-P2	PLAN & PROFILE
U1-U2	SEWER PLAN & PROFILES
U3-U5	SEWER SCHEDULES

FORSTER DRIVE RESURFACING ASSESSMENT DISTRICT-2021

CITY PROJECT NO. 13271
CONTRACT NO. 8577

CONVENTIONAL SIGNS	
FIELD VERIFY ALL UTILITY LOCATIONS	
GAS	— G —
STORM SEWER	— ST —
SANITARY SEWER	— SAN —
WATER	— W —
BURIED ELECTRIC	— E —
OVERHEAD ELECTRIC	— OH —
POWER POLE	□
ADA COMPLIANT RAMP W/ DETECTABLE WARNING FIELD	▒
COMBUSTIBLE FLUIDS	☀



PROJECT
LOCATION

PLOT SCALE: 1" = 1'

PLOT NAME: ---

REV. DATE: 6/9/2021 10:59 AM

ORIGINATOR: CITY_OF_MADISON

PUBLIC IMPROVEMENT PROJECT
APPROVED

APPROVED DATE: MAY 18, 2021

BY THE COMMON COUNCIL
OF MADISON, WISCONSIN

PUBLIC IMPROVEMENT DESIGN
APPROVED BY:

N. Greg Fries Jun 10, 2021

City Engineer Date

STREET
DESIGNED BY:



Jun 10, 2021

SANITARY SEWER
DESIGNED BY:

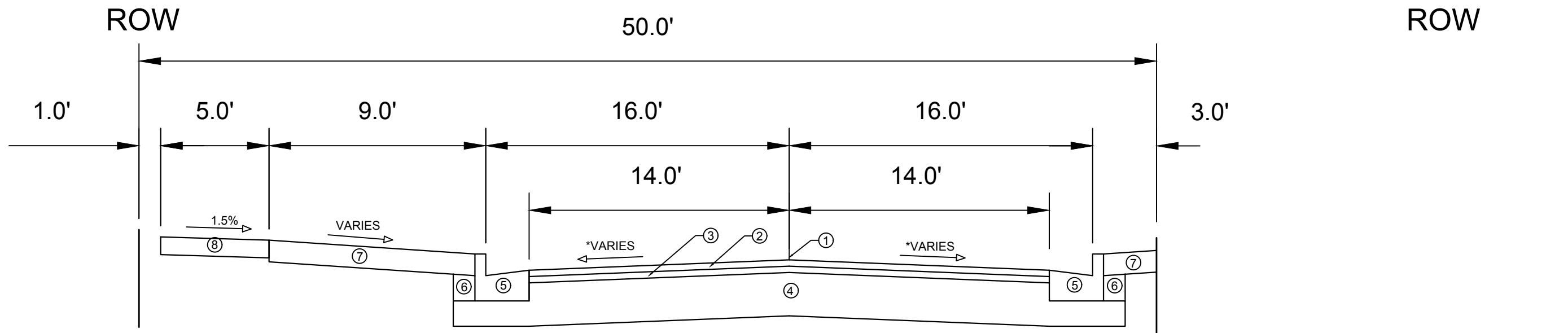


Jun 10, 2021

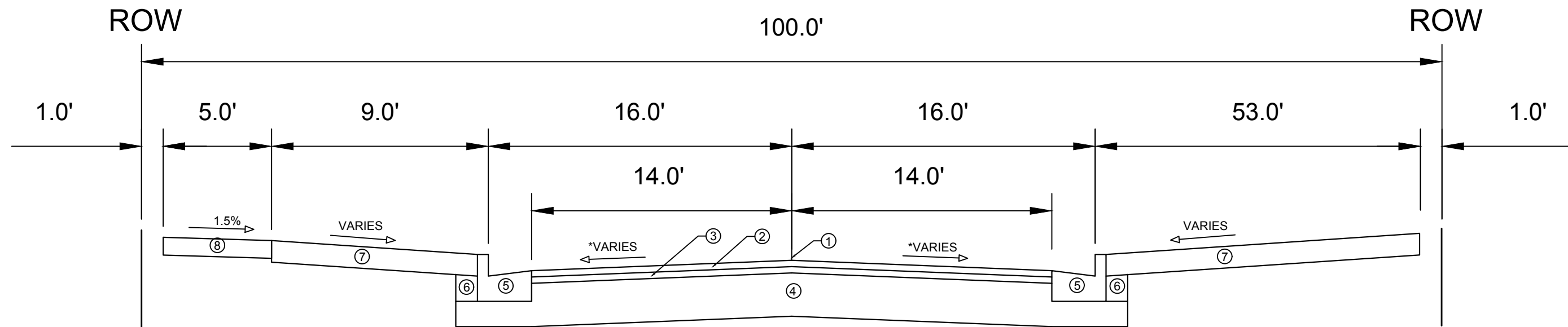
STORM SEWER
DESIGNED BY:



Jun 10, 2021



TYPICAL SECTION
FORSTER DRIVE STA 14+25 TO 19+00



TYPICAL SECTION
FORSTER DRIVE STA 10+00 TO 13+00

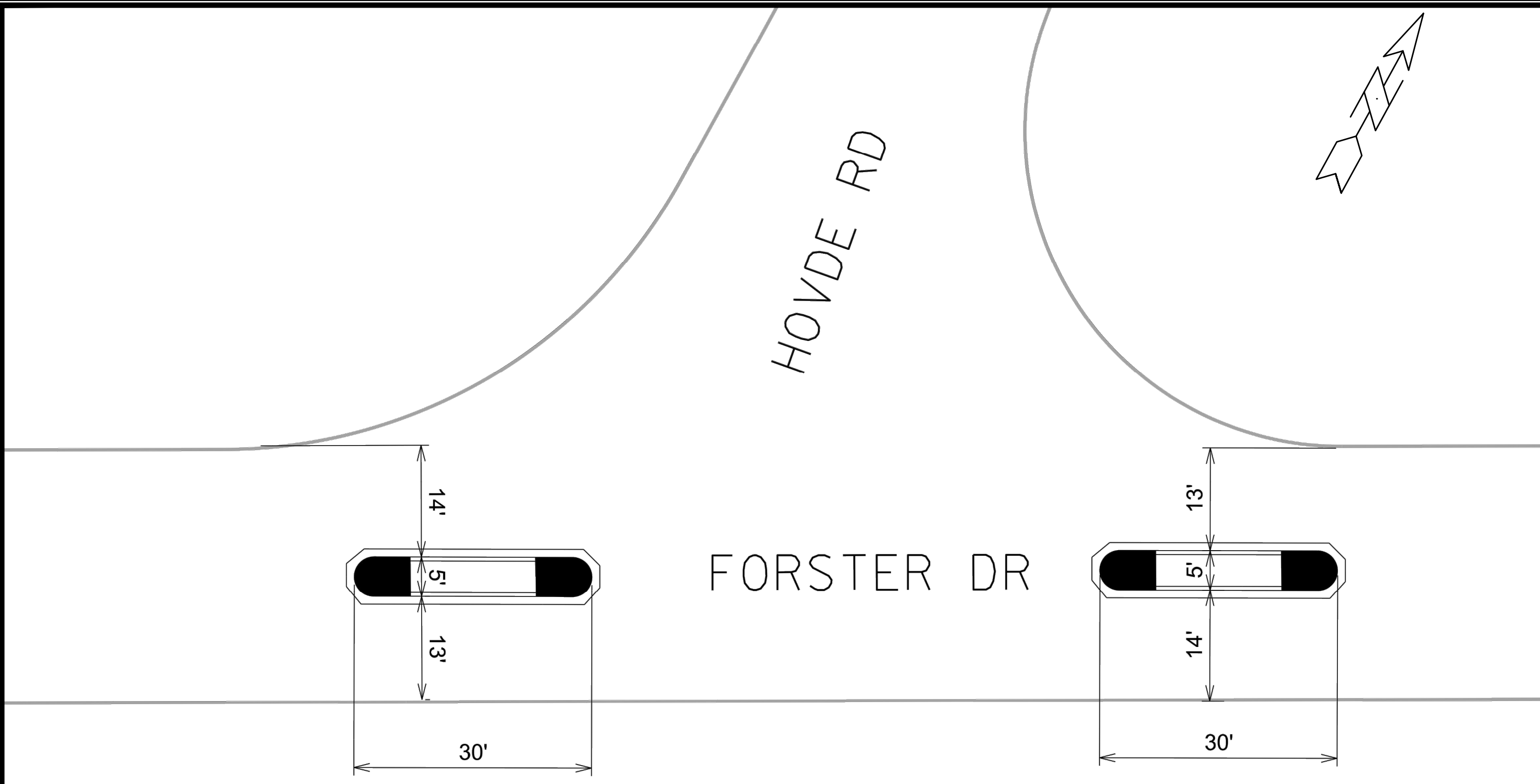
- ① POINT REFERRED TO ON PROFILE
- ② 1.75" HMA PAVEMENT- TYPE 4 LT 58-28 S
- ③ 1.75" HMA PAVEMENT- TYPE 4 LT 58-28 S
- ④ EXISTING BASE COURSE
- ⑤ CONCRETE CURB AND GUTTER, REMOVE AND REPLACE AS SHOWN ON THE P-SHEETS OR AS DIRECTED BY THE ENGINEER
- ⑥ FILL INCIDENTAL TO CURB AND GUTTER INSTALLATION
- ⑦ 6" TOPSOIL, SEED, & MAT AS NEEDED
- ⑧ 5" CONCRETE SIDEWALK, REMOVE AND REPLACE AS SHOWN ON THE P-SHEETS OR AS DIRECTED BY THE ENGINEER

MARK	REVISION	DATE	BY
13271		08/2021 8:14 AM	
Designed By: ###			
Scale:			D-1

13271
MADISON, WI
CONTRACT NO: 8577
TYPICAL SECTION
FORSTER DRIVE RESURFACING ASSESSMENT DISTRICT-2021
M:\DESIGN\Projects\13271\CAD\Streets\13271-D Sheets.dwg




13271
D-1

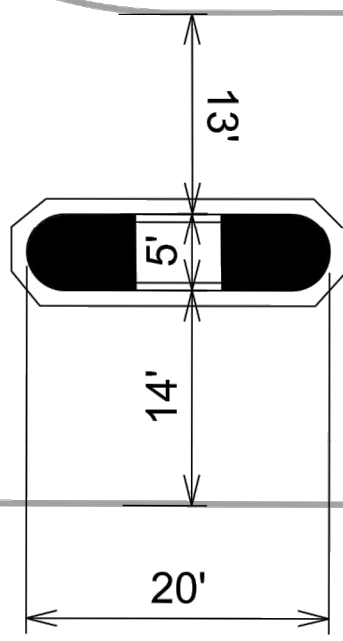
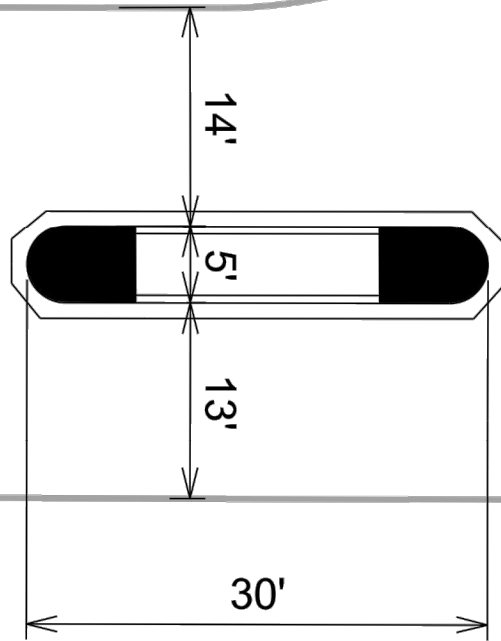


FORSTER DR

HOVDE RD

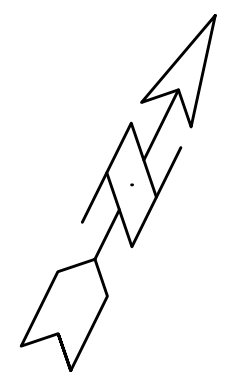
- Island Notes:
- Type "E" curb on islands.
 - Mountable median noses on island ends per SDD 3.13.
 - Yellow Epoxy Island Noses.
 - Center of islands to be stamped & colored concrete, "Westwood Brown" color.
 - Island sawcut lines to be marked in field by City Traffic Engineering.

ISLAND DETAILS-HOVDE RD		13271	MARK	REVISION	DATE	BY
FORSTER DRIVE RESURFACING ASSESSMENT DISTRICT-2021		MADISON, WI	13271		08/2021 8:14 AM	D-2
M:\DESIGN\Projects\13271\CAD\Streets\13271-D Sheets.dwg		CONTRACT NO:				
		8577				
		13271				
		D-2				




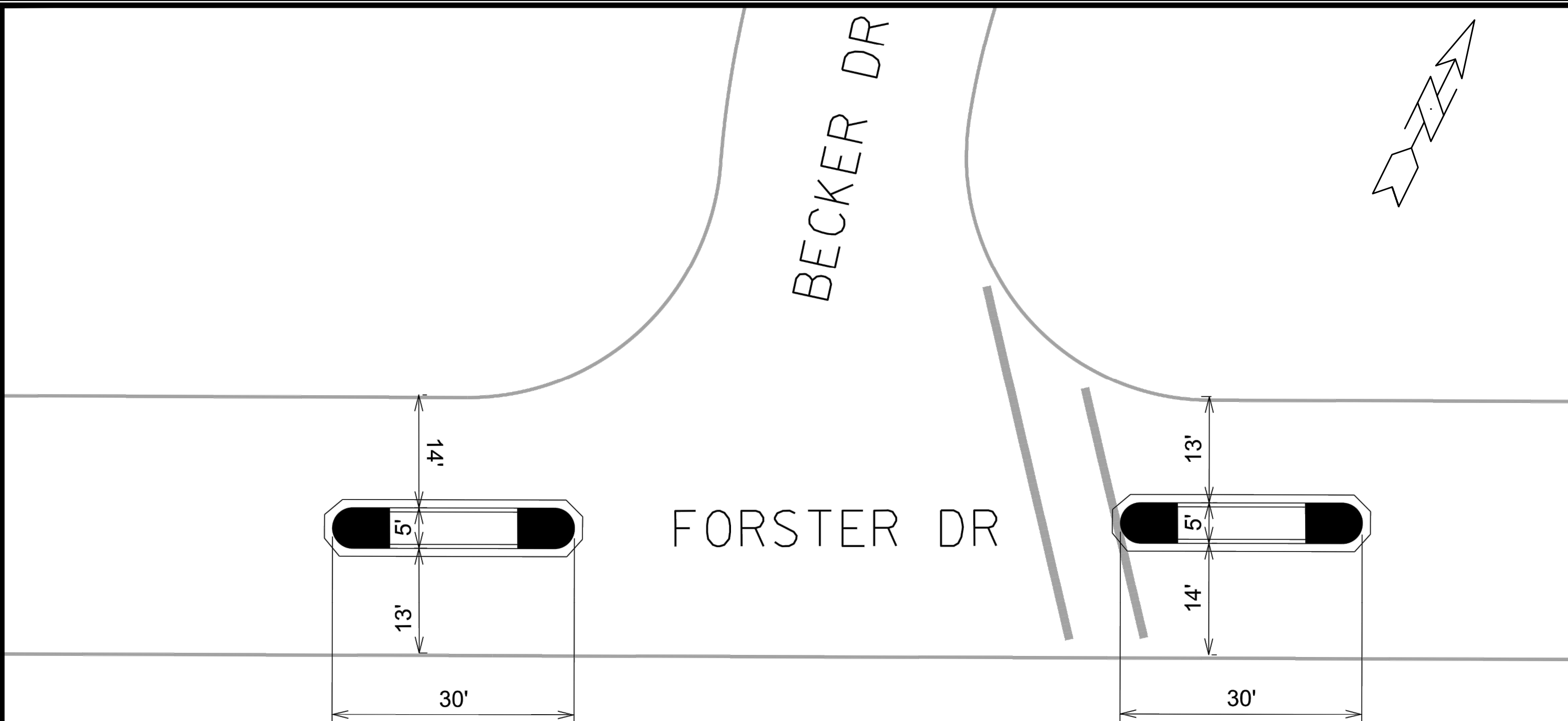
FORSTER DR

NOVICK DR



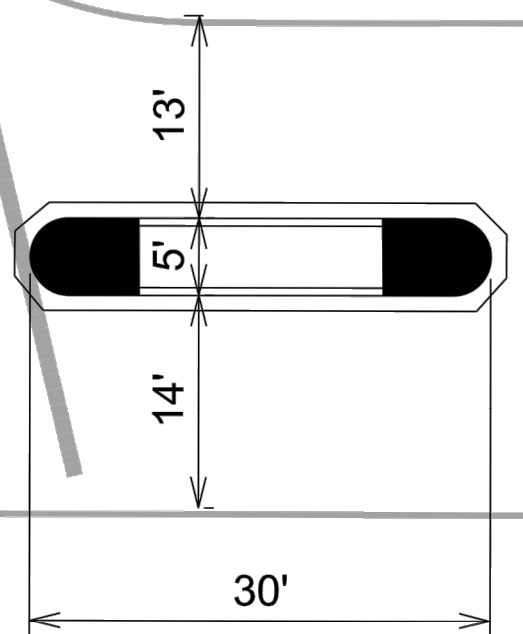
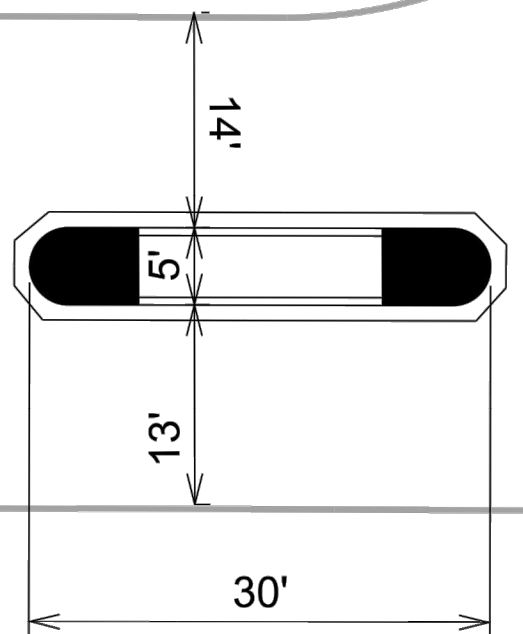
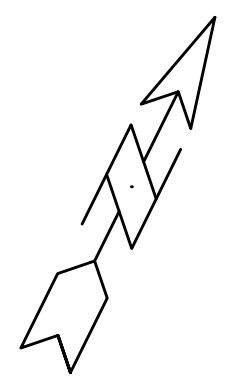
- Island Notes:
- Type "E" curb on islands.
 - Mountable median noses on island ends per SDD 3.13.
 - Yellow Epoxy Island Noses.
 - Center of islands to be stamped & colored concrete, "Westwood Brown" color.
 - Island sawcut lines to be marked in field by City Traffic Engineering.

13271		13271		13271		13271		13271	
ISLAND DETAILS-NOVICK DR		MADISON, WI		REVISION		DATE		BY	
FORSTER DRIVE RESURFACING ASSESSMENT DISTRICT-2021		CONTRACT NO: 8577		Date: 08/2021 8:14 AM		Scale:		D-3	
M:\DESIGN\Projects\13271\CAD\Streets\13271-D Sheets.dwg									
					<p>13271</p> <p>D-3</p>				








FORSTER DR

BECKER DR



- Island Notes:
- Type "E" curb on islands.
 - Mountable median noses on island ends per SDD 3.13.
 - Yellow Epoxy Island Noses.
 - Center of islands to be stamped & colored concrete, "Westwood Brown" color.
 - Island sawcut lines to be marked in field by City Traffic Engineering.

ISLAND DETAILS-BECKER DR		13271	MARK	REVISION	DATE	BY
FORSTER DRIVE RESURFACING ASSESSMENT DISTRICT-2021		MADISON, WI	13271		08/2021 8:14 AM	D-4
M:\DESIGN\Projects\13271\CAD\Streets\13271-D Sheets.dwg		CONTRACT NO:				
		8577				
		13271				
		D-4				

-  STREET CONSTRUCTION ENTRANCE BERM
-  CONSTRUCTION ENTRANCE
-  RIGID FRAME INLET PROTECTION
-  STREET CONSTRUCTION STONE BERM

EROSION CONTROL NOTES:

EROSION CONTROL MEASURES SHALL BE IN PLACE PRIOR TO ANY OTHER CONSTRUCTION ACTIVITY.

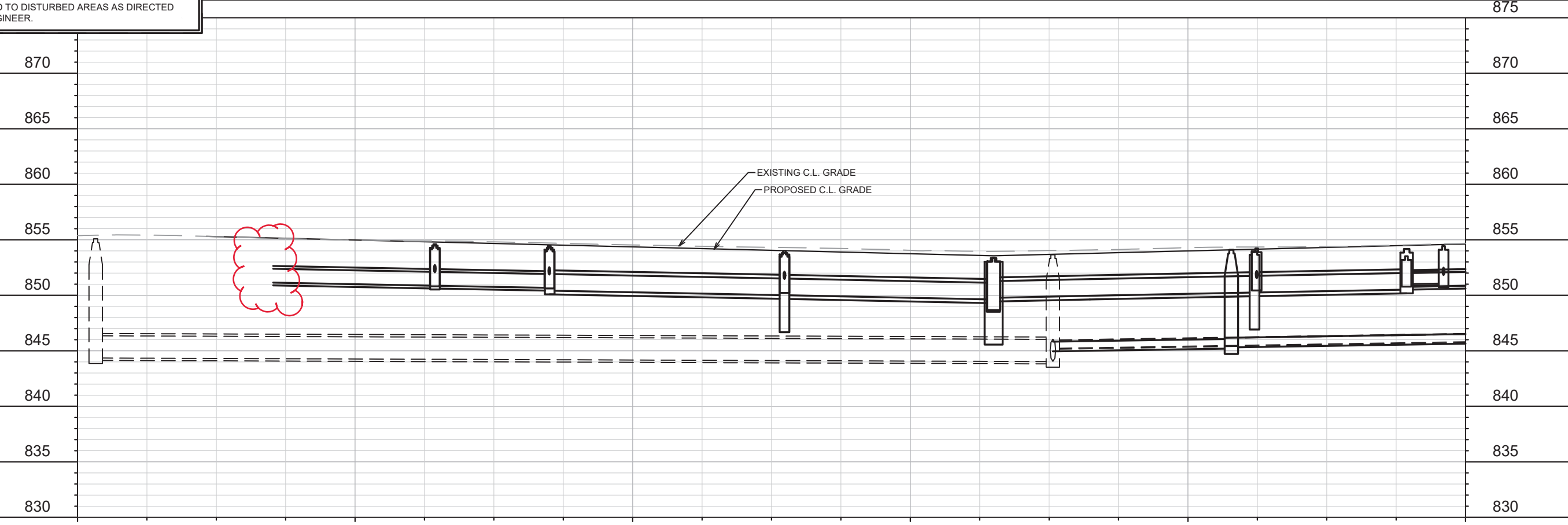
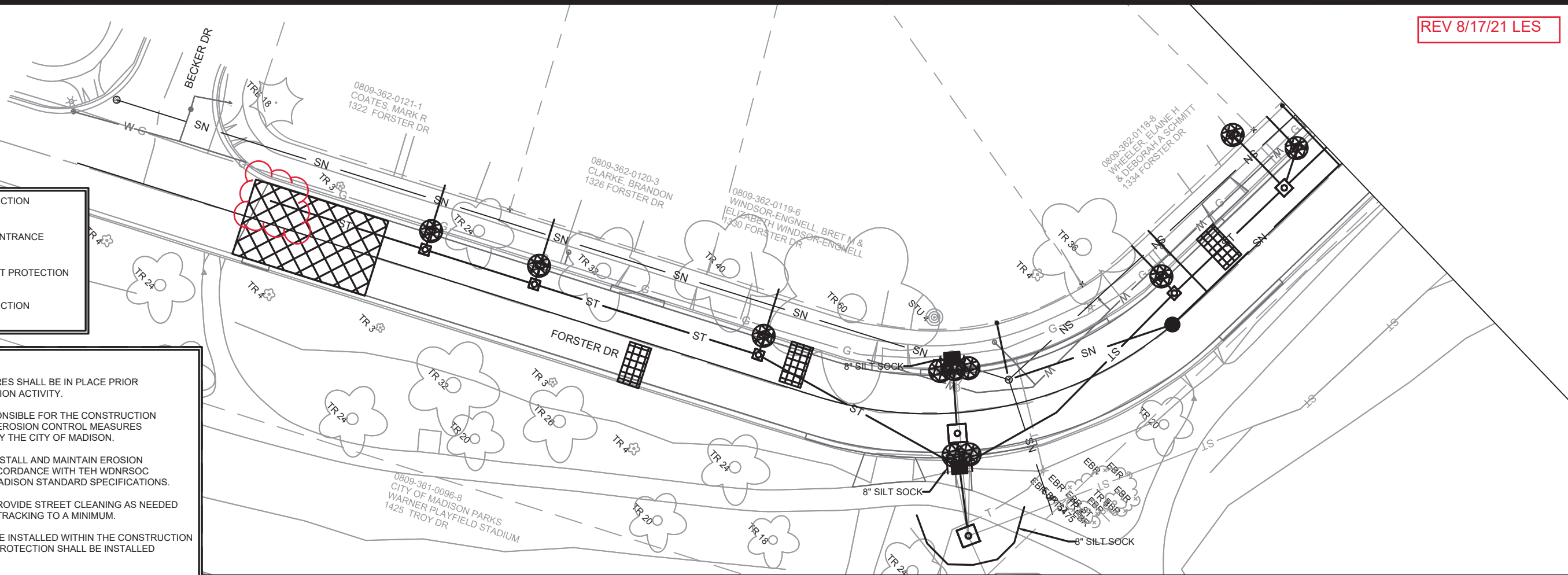
THE CONTRACTOR IS RESPONSIBLE FOR THE CONSTRUCTION AND MAINTENANCE OF ALL EROSION CONTROL MEASURES UNTIL FINAL ACCEPTANCE BY THE CITY OF MADISON.

THE CONTRACTOR SHALL INSTALL AND MAINTAIN EROSION CONTROL MEASURES IN ACCORDANCE WITH TEH WDNR SOC STANDARDS AND CITY OF MADISON STANDARD SPECIFICATIONS.

THE CONTRACTOR SHALL PROVIDE STREET CLEANING AS NEEDED ON A DAILY BASIS TO KEEP TRACKING TO A MINIMUM.

INLET PROTECTION SHALL BE INSTALLED WITHIN THE CONSTRUCTION LIMITS. ADDITIONAL INLET PROTECTION SHALL BE INSTALLED AS DIRECTED.

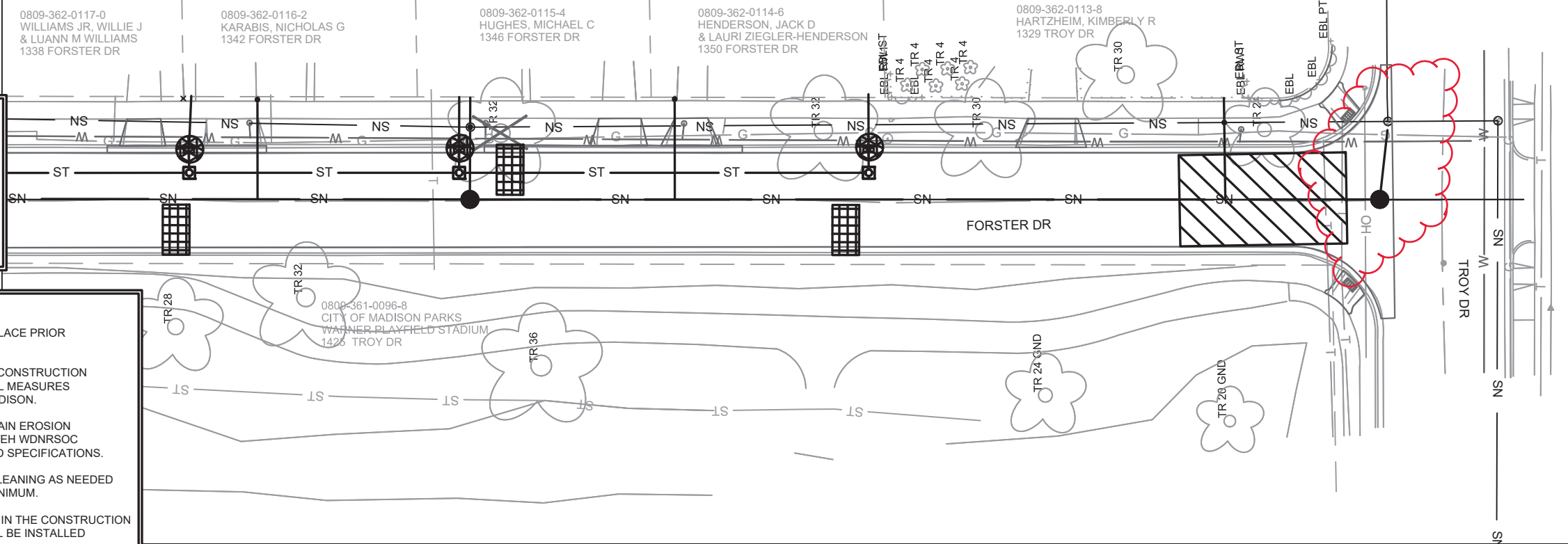
POLYMER SHALL BE APPLIED TO DISTURBED AREAS AS DIRECTED BY THE CONSTRUCTION ENGINEER.



MARK	REVISION	DATE	BY
13271	DESIGNED BY LES	8/17/2021 1:32 PM	Scale: 1" = 40'
13271	EC-1		

13271
 MADISON, WI
 FORSTER DRIVE RESURFACING ASSESSMENT DISTRICT-2021
 CONTRACT NO: 8577

REV 8/17/21 LES



- STREET CONSTRUCTION ENTRANCE BERM
- CONSTRUCTION ENTRANCE
- RIGID FRAME INLET PROTECTION
- STREET CONSTRUCTION STONE BERM

EROSION CONTROL NOTES:

EROSION CONTROL MEASURES SHALL BE IN PLACE PRIOR TO ANY OTHER CONSTRUCTION ACTIVITY.

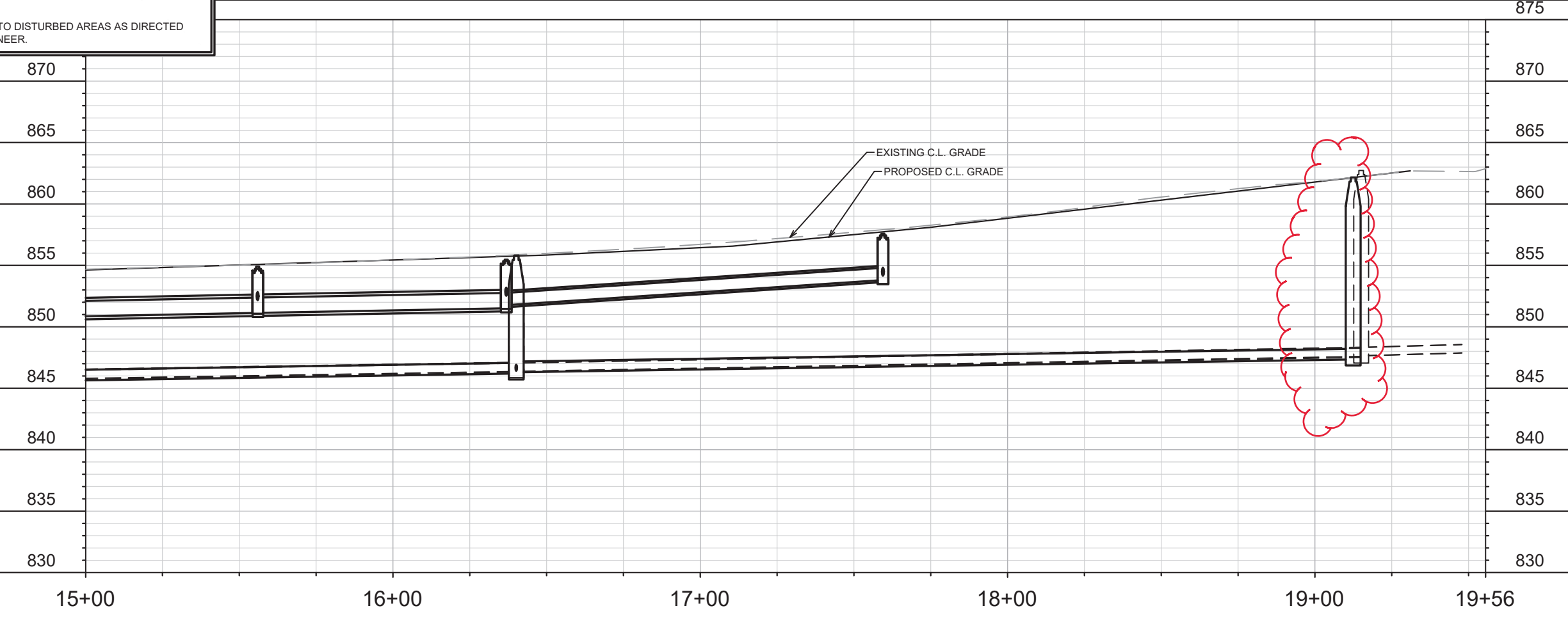
THE CONTRACTOR IS RESPONSIBLE FOR THE CONSTRUCTION AND MAINTENANCE OF ALL EROSION CONTROL MEASURES UNTIL FINAL ACCEPTANCE BY THE CITY OF MADISON.

THE CONTRACTOR SHALL INSTALL AND MAINTAIN EROSION CONTROL MEASURES IN ACCORDANCE WITH THE WDNR SOC STANDARDS AND CITY OF MADISON STANDARD SPECIFICATIONS.

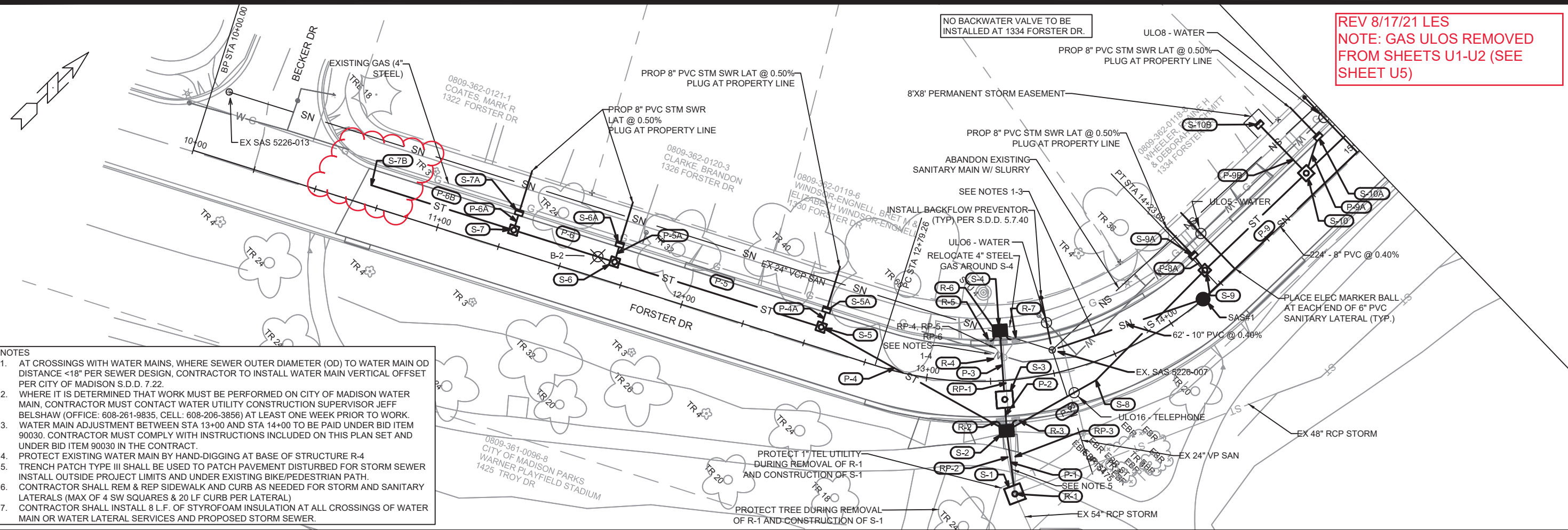
THE CONTRACTOR SHALL PROVIDE STREET CLEANING AS NEEDED ON A DAILY BASIS TO KEEP TRACKING TO A MINIMUM.

INLET PROTECTION SHALL BE INSTALLED WITHIN THE CONSTRUCTION LIMITS. ADDITIONAL INLET PROTECTION SHALL BE INSTALLED AS DIRECTED.

POLYMER SHALL BE APPLIED TO DISTURBED AREAS AS DIRECTED BY THE CONSTRUCTION ENGINEER.



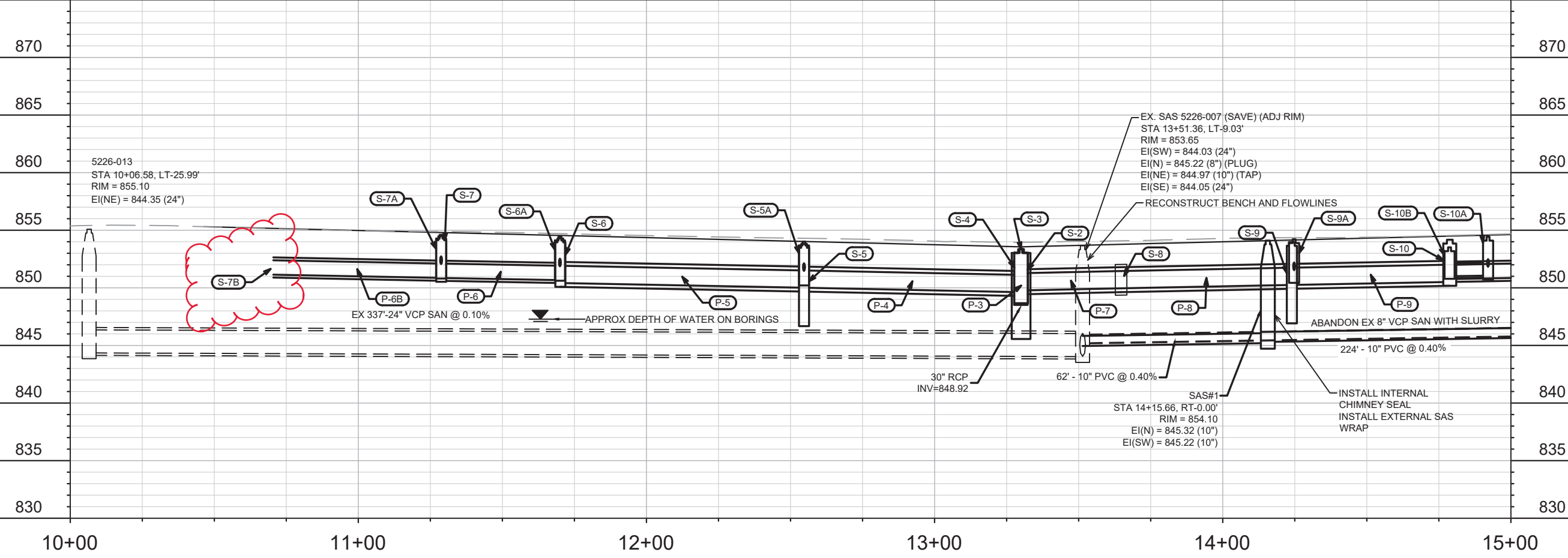
13271	MADISON, WI	8577	EC-2
EROSION CONTROL PLAN		CONTRACT NO:	
FORSTER DRIVE RESURFACING ASSESSMENT DISTRICT-2021		M:\DESIGN\Projects\13271\CAD\Sewers\13271_Sewer.dwg	
		13271	EC-2



REV 8/17/21 LES
 NOTE: GAS ULOS REMOVED FROM SHEETS U1-U2 (SEE SHEET U5)

- NOTES
1. AT CROSSINGS WITH WATER MAINS, WHERE SEWER OUTER DIAMETER (OD) TO WATER MAIN OD DISTANCE <18" PER SEWER DESIGN, CONTRACTOR TO INSTALL WATER MAIN VERTICAL OFFSET PER CITY OF MADISON S.D.D. 7.22.
 2. WHERE IT IS DETERMINED THAT WORK MUST BE PERFORMED ON CITY OF MADISON WATER MAIN, CONTRACTOR MUST CONTACT WATER UTILITY CONSTRUCTION SUPERVISOR JEFF BELSHAW (OFFICE: 608-261-9835, CELL: 608-206-3856) AT LEAST ONE WEEK PRIOR TO WORK.
 3. WATER MAIN ADJUSTMENT BETWEEN STA 13+00 AND STA 14+00 TO BE PAID UNDER BID ITEM 90030. CONTRACTOR MUST COMPLY WITH INSTRUCTIONS INCLUDED ON THIS PLAN SET AND UNDER BID ITEM 90030 IN THE CONTRACT.
 4. PROTECT EXISTING WATER MAIN BY HAND-DIGGING AT BASE OF STRUCTURE R-4
 5. TRENCH PATCH TYPE III SHALL BE USED TO PATCH PAVEMENT DISTURBED FOR STORM SEWER INSTALL OUTSIDE PROJECT LIMITS AND UNDER EXISTING BIKE/PEDESTRIAN PATH.
 6. CONTRACTOR SHALL REM & REP SIDEWALK AND CURB AS NEEDED FOR STORM AND SANITARY LATERALS (MAX OF 4 SW SQUARES & 20 LF CURB PER LATERAL)
 7. CONTRACTOR SHALL INSTALL 8 L.F. OF STYROFOAM INSULATION AT ALL CROSSINGS OF WATER MAIN OR WATER LATERAL SERVICES AND PROPOSED STORM SEWER.

875 875



10+00 11+00 12+00 13+00 14+00 15+00

DATE	BY	U-1
REVISION	DATE	1" = 40'
MARK	DESIGNED BY	13271
13271	8577	

13271
 MADISON, WI
 CONTRACT NO.: 8577

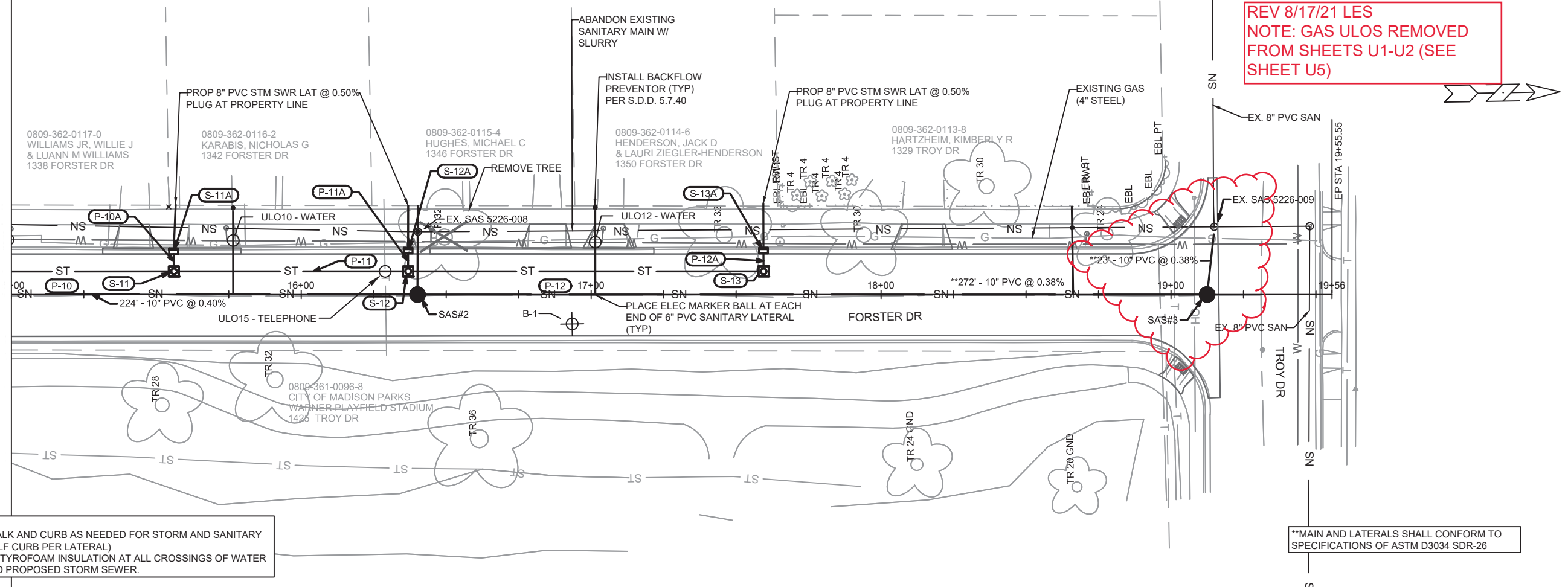
UTILITY PLAN & PROFILE - FORSTER DR
 FORSTER DRIVE RESURFACING ASSESSMENT DISTRICT-2021

M:\DESIGN\Projects\13271\CAD\Sewers\13271_Sewer.dwg

CITY OF MADISON
 WISCONSIN

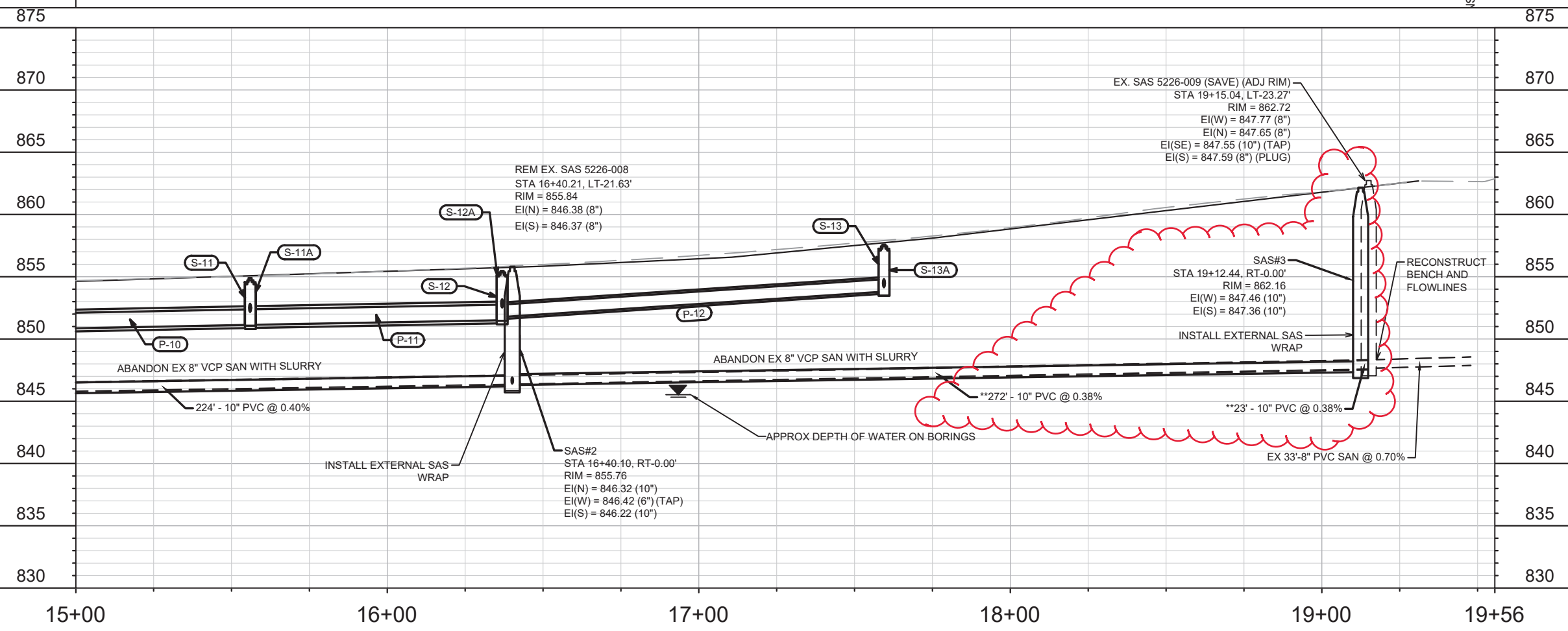
13271
 U-1

REV 8/17/21 LES
 NOTE: GAS ULOS REMOVED
 FROM SHEETS U1-U2 (SEE
 SHEET U5)



NOTES
 1. CONTRACTOR SHALL REM & REP SIDEWALK AND CURB AS NEEDED FOR STORM AND SANITARY LATERALS (MAX OF 4 SW SQUARES & 20 LF CURB PER LATERAL)
 2. CONTRACTOR SHALL INSTALL 8 L.F. OF STYROFOAM INSULATION AT ALL CROSSINGS OF WATER MAIN OR WATER LATERAL SERVICES AND PROPOSED STORM SEWER.

**MAIN AND LATERALS SHALL CONFORM TO SPECIFICATIONS OF ASTM D3034 SDR-26



13271	MADISON, WI	8577	U-2
UTILITY PLAN & PROFILE - FORSTER DR			
FORSTER DRIVE RESURFACING ASSESSMENT DISTRICT-2021			
M:\DESIGN\Projects\13271\CAD\Sewers\13271_Sewer.dwg			
13271			
U-2			

SANITARY SEWER SCHEDULE

*REV 8/17/21 LES

FORSTER DRIVE RESURFACING ASSESSMENT DISTRICT - 2021 PROJECT NO. 13271	SHEET NO. U-3
SANITARY SEWER SCHEDULE	
CITY OF MADISON	

PROPOSED SANITARY STRUCTURES

SAS NO.	STATION	LOCATION (OFFSET)	TYPE	TOP OF CASTING	E.I.	DEPTH (FT)	NOTES
SAS#1	14+15.66	CL	4' DIA	854.10	845.22	8.88	SEE SPEC. NOTES 1 AND 2
SAS#2	16+40.10	CL	4' DIA	855.76	846.22	9.54	SEE SPEC. NOTE 2
* SAS#3	19+12.44	CL	4' DIA	862.16	847.36	14.80	SEE SPEC. NOTE 2

PROPOSED SANITARY PIPES

FROM (DNSTM)	TO (UPSTM)	DWNSTRM E.I.	UPSTRM E.I.	PLAN LGTH (FT)	SLOPE (%)	PIPE SIZE	PVC TYPE	NOTES
EX. SAS 5226-007	SAS#1	844.97	845.22	62	0.40%	10	SDR-35	
SAS#1	SAS#2	845.32	846.22	224	0.40%	10	SDR-35	
* SAS#2	SAS#3	846.32	847.36	272	0.38%	10	SDR-26	
* SAS#3	EX. SAS 5226-009	847.46	847.55	23	0.38%	10	SDR-26	

SANITARY STRUCTURE REMOVALS OR ABANDONMENTS

STRUCTURE ID NO.	STATION	LOCATION (OFFSET)	TYPE	TOP OF CASTING	E.I.	DEPTH	NOTES
EX. SAS 5226-008	16+40.21	LT-21.63	4' DIA	855.84	846.37	9.47	REMOVE SAS

SANITARY PIPE ABANDONMENT

ABANDON FROM	ABANDON TO	LGTH (FT)	PIPE TYPE	PIPE SIZE	PAID (Y/N)	NOTES
EX. SAS 5226-008	EX. SAS 5226-009	275	VCP	8	Y	3.6 CY SLURRY
EX. SAS 5226-007	EX. SAS 5226-008	281	VCP	8	Y	3.6 CY SLURRY

SPECIFIC NOTES

- 1) INSTALL INTERNAL CHIMNEY SEAL IN ACCORDANCE WITH CITY OF MADISON S.D.D. 5.7.17
- 2) INSTALL EXTERNAL SAS WRAP IN ACCORDANCE WITH CITY OF MADISON S.D.D. 5.7.2

STORM SEWER SCHEDULE

*REV 8/17/21 LES

FORSTER DRIVE RESURFACING
ASSESSMENT DISTRICT - 2021
PROJECT NO. 13271

SHEET NO.
U-4

STORM SEWER SCHEDULE

CITY OF MADISON

PROPOSED STORM STRUCTURES

STRUC. NO.	STATION	LOCATION (OFFSET)	TYPE	TOP OF CASTING	E.I.	DEPTH	NOTES
S-1	13+31.02	RT-44.49	6'X6' STORM SAS	853.82	847.41	6.41	FP; W/ R-1550-0054
S-2	13+29.92	RT-19.64	TERRACE INLET TYPE 2	853.35	848.85	4.50	FP; SEE S.D.D. 5.7.12A; LP
S-3	13+30.00	RT-7.37	6'X6' CATCHBASIN	853.36	848.89	4.47	FP; SEE SPEC. NOTE 1
S-4	13+30.04	LT-19.60	TERRACE INLET TYPE 2	853.39	849.00	4.39	FP; SEE S.D.D. 5.7.12A; LP
S-5	12+54.68	LT-7.94	3'X3' CATCHBASIN	853.81	850.01	3.80	FP; SEE SPEC. NOTE 1
S-5A	12+54.66	LT-15.05	TYPE "H" INLET	854.01	850.54	3.47	W/ R-3067-7004-V
S-6	11+70.09	LT-7.95	3'X3' STORM SAS	854.28	850.42	3.86	W/ R-1550-0054
S-6A	11+69.96	LT-15.05	TYPE "H" INLET	854.45	850.95	3.50	W/ R-3067-7004-V
S-7	11+28.77	LT-7.95	3'X3' STORM SAS	854.48	850.86	3.62	W/ R-1550-0054
S-7A	11+28.72	LT-15.10	TYPE "H" INLET	854.60	851.14	3.46	W/ R-3067-7004-V
* S-7B	10+70.48	LT-7.96	PLUG	-	851.14	-	
* S-7C	40+59.66	LT-7.83	PLUG	-	851.19	-	
S-8	13+64.70	RT-7.08	PRECAST 18-IN RCP 16° BEND	-	849.96	-	
S-9	14+23.97	LT-7.95	3'X3' CATCHBASIN	853.98	850.25	3.73	FP; SEE SPEC. NOTE 1
S-9A	14+24.75	LT-15.15	TYPE "H" INLET	854.22	850.77	3.45	W/ R-3067-7004-V
S-10	14+78.79	LT-7.96	4'X4' STORM SAS	854.17	850.51	3.66	FP; W/ R-1550-0054
S-10A	14+92.07	LT-15.08	TYPE "H" INLET	854.43	851.06	3.37	W/ R-3067-7004-V
S-10B	14+78.70	LT-34.39	TYPE "H" INLET	853.52	851.12	2.40	W/ R-1878-B7G
S-11	15+56.06	LT-7.97	3'X3' STORM SAS	854.72	851.13	3.59	W/ R-1550-0054
S-11A	15+55.96	LT-14.93	TYPE "H" INLET	854.90	851.40	3.50	W/ R-3067-7004-V
S-12	16+36.86	LT-7.98	3'X3' STORM SAS	855.35	851.51	3.84	W/ R-1550-0054
S-12A	16+36.85	LT-15.19	TYPE "H" INLET	855.47	851.79	3.68	W/ R-3067-7004-V
S-13	17+59.46	LT-7.99	3'X3' STORM SAS	857.44	853.80	3.64	W/ R-1550-0054
S-13A	17+59.43	LT-15.18	TYPE "H" INLET	857.58	853.82	3.76	W/ R-3067-7004-V

PROPOSED STORM PIPES

PIPE NO.	FROM (DNSTM)	TO (UPSTM)	DISCH. E.I.	INLET E.I.	PLAN (PAY) LGTH (FT)	PIPE LGTH (FT)	SLOPE (%)	PIPE SIZE	TYPE	NOTES
P-1	S-1	S-2	848.65	848.85	25	20	0.99%	29x45	HERCP	
P-2	S-2	S-3	848.85	848.89	12	8	0.50%	30	RCP	
P-3	S-3	S-4	848.89	849.00	27	22	0.50%	30	RCP	
P-4	S-2	S-5	849.62	850.01	83	79	0.50%	18	RCP	
P-4A	S-5	S-5A	850.51	850.54	7	5	0.50%	12	RCP	
P-5	S-5	S-6	850.01	850.42	85	82	0.50%	18	RCP	
P-5A	S-6	S-6A	850.92	850.95	7	5	0.50%	12	RCP	
P-6	S-6	S-7	850.67	850.86	41	38	0.50%	15	RCP	
P-6A	S-7	S-7A	851.11	851.14	7	5	0.50%	12	RCP	
P-6B	S-7	S-7B	850.86	851.14	58	55	0.50%	15	RCP	
* P-6C	S-7B	S-7C	851.14	851.19	44	9	0.50%	15	RCP	
P-7	S-2	S-8	849.77	849.96	40	38	0.50%	18	RCP	
P-8	S-8	S-9	849.96	850.25	60	59	0.50%	18	RCP	
P-8A	S-9	S-9A	850.75	850.77	7	5	0.50%	12	RCP	
P-9	S-9	S-10	850.25	850.51	55	51	0.50%	18	RCP	
P-9A	S-10	S-10A	851.01	851.06	15	11	0.50%	12	RCP	
P-9B	S-10	S-10B	851.01	851.12	26	23	0.50%	12	TYPE II PAVEMENT STORM	
P-10	S-10	S-11	850.76	851.13	77	74	0.50%	15	RCP	
P-10A	S-11	S-11A	851.38	851.40	7	4	0.50%	12	RCP	
P-11	S-11	S-12	851.13	851.51	81	78	0.50%	15	RCP	
P-11A	S-12	S-12A	851.76	851.79	7	5	0.50%	12	RCP	
P-12	S-12	S-13	851.76	853.80	123	120	1.70%	12	RCP	
P-12A	S-13	S-13A	853.80	853.82	7	5	0.50%	12	RCP	

PROPOSED STORM STRUCTURE REMOVALS

STRUC. NO.	ID NO.	STATION	LOCATION (OFFSET)	TYPE	NOTES
R-1	AS5226-011	13+31.05	RT-44.50	6'X6' STORM SAS	
R-2	IN5226-010	13+27.98	RT-15.44	TYPE "H" INLET	
R-3	IN5226-008	13+33.36	RT-15.41	TYPE "H" INLET	
R-4	IN5226-005	13+30.83	LT-8.99	6'X7' STORM SAS	
R-5	IN5226-009	13+25.27	LT-15.59	TYPE "H" INLET	
R-6	IN5226-006	13+31.13	LT-15.49	TYPE "H" INLET	
R-7	IN5226-007	13+36.65	LT-15.46	TYPE "H" INLET	

PROPOSED STORM PIPE REMOVALS

REMOVAL NO.	REMOVE FROM	REMOVE TO	LGTH (FT)	PIPE SIZE	PIPE TYPE	PAID (Y/N)	NOTES
RP-1	R-1	R-4	53	12	RCP	N	
RP-2	R-1	R-2	29	12	RCP	N	
RP-3	R-1	R-3	29	12	RCP	N	
RP-4	R-4	R-5	8	12	RCP	Y	
RP-5	R-4	R-6	7	12	RCP	N	
RP-6	R-4	R-7	8	12	RCP	Y	

SPECIFIC NOTES:

1) STRUCTURE DEPTH LISTED DOES NOT INCLUDE 3' SUMP. ALL CATCHBASINS TO HAVE R-1550-0054 CASTING.

STANDARD NOTES:

-PLAN LENGTH (PAY LENGTH) IS FROM CENTER OF STRUCTURE TO CENTER OF STRUCTURE. PIPE LENGTH IS ACTUAL LENGTH OF PIPE FROM STRUCTURE WALL TO STRUCTURE WALL. SLOPE CALCULATED USING PIPE LENGTH.

- ABBREVIATIONS: AE = APRON ENDWALL; RCP = REINFORCED CONCRETE PIPE; HERCP = HORIZONTAL ELLIPTICAL REINFORCED CONCRETE PIPE; DNA = DOES NOT APPLY; SAS = SEWER ACCESS STRUCTURE; LP = LOW POINT INLET STRUCTURE; FP = FIELD POURED STRUCTURE; TR = TOP OF CONCRETE ROOF; NCM = NO CROWN MATCH FOR PIPES; UD = UNDERDRAIN

- APPROXIMATE DISCHARGE E.I. GIVEN, ADJUST E.I. AND PIPE SLOPE IN THE FIELD.

- TOP OF CASTING GRADE GIVEN IS THE TOP OF CURB FOR INLET STRUCTURES AND THE FLOWLINE OF THE CLOSED CASTING FOR SAS's.

- ALL REINFORCED CONCRETE PIPES TO BE CLASS III UNLESS OTHERWISE NOTED.

- SURVEYOR TO CONFIRM THAT ALL INLET STATION / OFFSETS LINE UP WITH PROPOSED CURB AND GUTTER.

-ALL FIELD POURED SAS STORM STRUCTURES SHALL BE CONSTRUCTED IN ACCORDANCE WITH STANDARD DETAIL DRAWING 5.7.3. ALL PRECAST SAS STORM STRUCTURES SHALL BE CONSTRUCTED IN ACCORDANCE WITH STANDARD DETAIL DRAWING 5.7.5.

- ALL STRUCTURES CALLED OUT AS FIELD POURED SHALL BE FIELD POURED. ALL OTHER STRUCTURES (NOT INDICATED AS FIELD POURED) SHALL BE SUBMITTED TO CITY ENGINEERING FOR APPROVAL IF PRECAST STRUCTURES ARE PREFERRED. CONTACT LAUREN STRIEGL OF CITY ENGINEERING AT (608) 266-4094 FOR PRECAST APPROVALS, FAX SHOP DRAWINGS TO (608)264-9275, OR EMAIL SHOP DRAWINGS TO LSTRIEGL@CITYOFMADISON.COM.

-ALL REBAR FOR FIELD POUR STRUCTURES SHALL BE EPOXY COATED. ANY EXPOSED STEEL SHALL BE TOUCHED UP OR RECOATED PRIOR TO USE.

STORM SEWER SCHEDULE

*REV 8/17/21 LES

FORSTER DRIVE RESURFACING
ASSESSMENT DISTRICT - 2021
PROJECT NO. 13271

SHEET NO.

U-5

STORM SEWER SCHEDULE - ULO LOCATIONS

CITY OF MADISON

PROPOSED ULOS

ULO NO.	STATION	LOCATION (OFFSET)	UTILITY TYPE	DEPTH	NOTES
* ULO1	11+28.65	LT-17.79	GAS	-	
* ULO2	11+69.84	LT-18.06	GAS	-	
* ULO3	12+54.64	LT-18.47	GAS	-	
* ULO4	14+24.73	LT-20.05	GAS	-	
ULO5	14+32.77	LT-19.35	WATER	-	
ULO6	13+51.62	LT-19.92	WATER	-	
* ULO7	14+92.04	LT-20.21	GAS	-	
ULO8	14+98.81	LT-18.90	WATER	-	
* ULO9	15+56.03	LT-17.19	GAS	-	
ULO10	15+76.52	LT-18.66	WATER	-	
* ULO11	16+36.86	LT-17.94	GAS	-	
ULO12	17+01.38	LT-18.05	WATER	-	
* ULO13	17+59.25	LT-19.97	GAS	-	
* ULO14	14+78.74	LT-20.10	GAS	-	
ULO15	16+28.91	LT-7.99	TELEPHONE	-	
ULO16	13+55.60	RT-9.23	TELEPHONE	-	

SPECIFIC NOTES:

STANDARD NOTES:

-PLAN LENGTH (PAY LENGTH) IS FROM CENTER OF STRUCTURE TO CENTER OF STRUCTURE. PIPE LENGTH IS ACTUAL LENGTH OF PIPE FROM STRUCTURE WALL TO STRUCTURE WALL. SLOPE CALCULATED USING PIPE LENGTH.

- ABBREVIATIONS: AE = APRON ENDWALL; RCP = REINFORCED CONCRETE PIPE; HERCP = HORIZONTAL ELLIPTICAL REINFORCED CONCRETE PIPE; DNA = DOES NOT APPLY; SAS = SEWER ACCESS STRUCTURE; LP = LOW POINT INLET STRUCTURE; FP = FIELD POURED STRUCTURE; TR = TOP OF CONCRETE ROOF; NCM = NO CROWN MATCH FOR PIPES; UD = UNDERDRAIN

- APPROXIMATE DISCHARGE E.I. GIVEN, ADJUST E.I. AND PIPE SLOPE IN THE FIELD.

- TOP OF CASTING GRADE GIVEN IS THE TOP OF CURB FOR INLET STRUCTURES AND THE FLOWLINE OF THE CLOSED CASTING FOR SAS's.

- ALL REINFORCED CONCRETE PIPES TO BE CLASS III UNLESS OTHERWISE NOTED.

- SURVEYOR TO CONFIRM THAT ALL INLET STATION / OFFSETS LINE UP WITH PROPOSED CURB AND GUTTER.

-ALL FIELD POURED SAS STORM STRUCTURES SHALL BE CONSTRUCTED IN ACCORDANCE WITH STANDARD DETAIL DRAWING 5.7.3. ALL PRECAST SAS STORM STRUCTURES SHALL BE CONSTRUCTED IN ACCORDANCE WITH STANDARD DETAIL DRAWING 5.7.5.

- ALL STRUCTURES CALLED OUT AS FIELD POURED SHALL BE FIELD POURED. ALL OTHER STRUCTURES (NOT INDICATED AS FIELD POURED) SHALL BE SUBMITTED TO CITY ENGINEERING FOR APPROVAL IF PRECAST STRUCTURES ARE PREFERRED. CONTACT LAUREN STRIEGL OF CITY ENGINEERING AT (608) 266-4094 FOR PRECAST APPROVALS, FAX SHOP DRAWINGS TO (608)264-9275, OR EMAIL SHOP DRAWINGS TO LSTRIEGL@CITYOFMADISON.COM.

-ALL REBAR FOR FIELD POUR STRUCTURES SHALL BE EPOXY COATED. ANY EXPOSED STEEL SHALL BE TOUCHED UP OR RECOATED PRIOR TO USE.